



# DOWNLIGHT D2

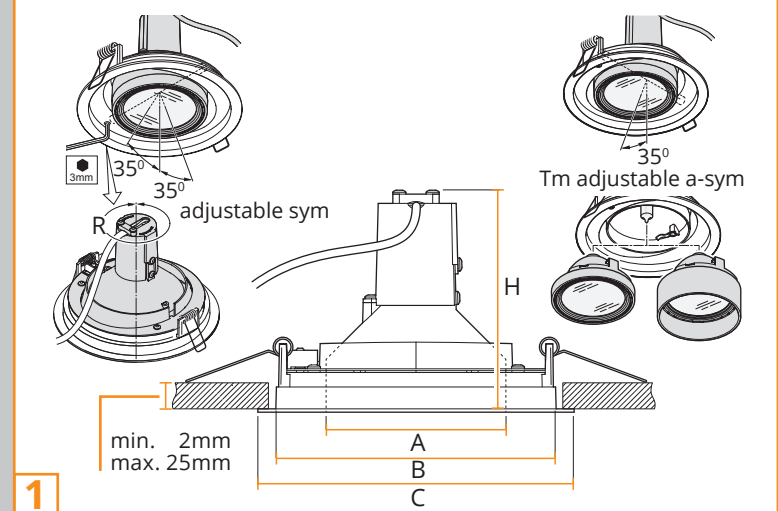
Compact Micro

## Technical Specifications

Version 1

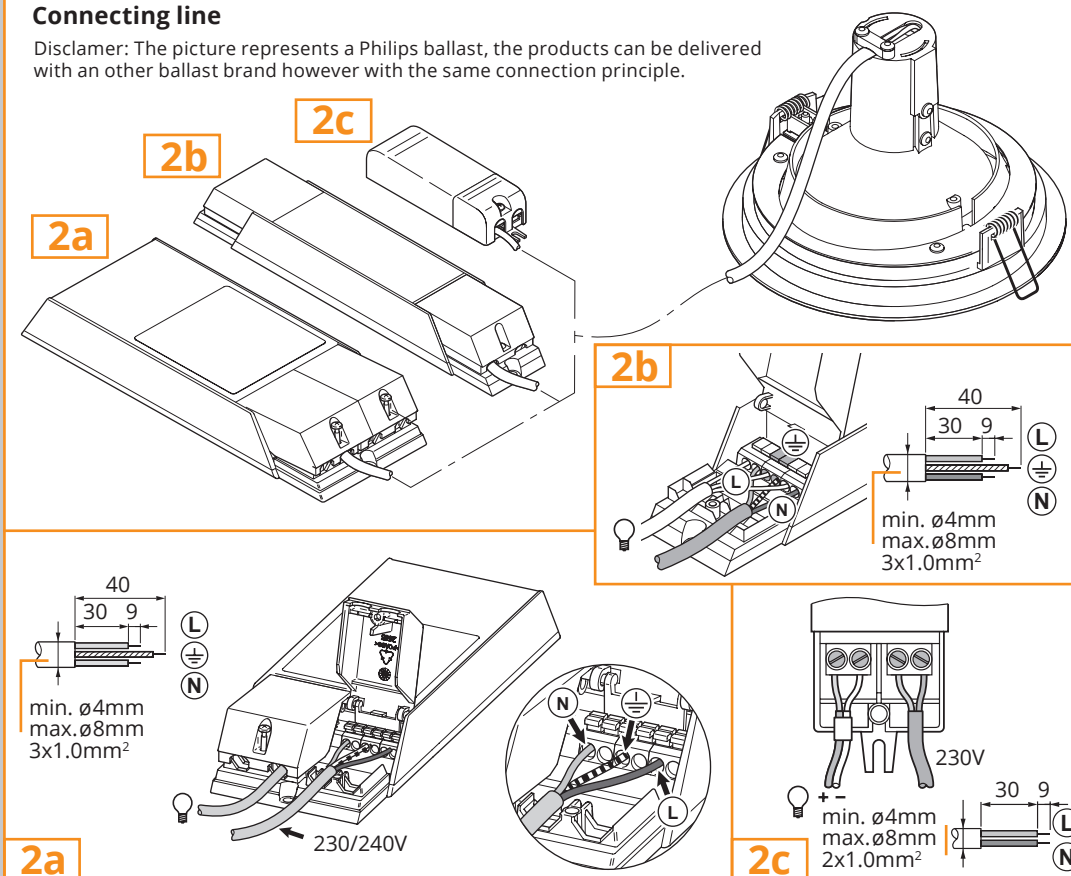
			A	B	C	H		R
D2-M asym	1x CDM-Tm 20-35W	125	81	123	143	92	0.40	350°
	LED 10W						0.50	
	1x HAL 50W max.						0.40	
D2-C asym	1x CDM-TC 35-70W	142	100	140	160	120	0.45	350°
	1x HAL 50W max.							
D2-C asym	1x CDM-TC 35-70W	153	100	151	171	120	0.48	180°
	1x HAL 50W max.							

## Track version - dimensions



## Connecting line

Disclaimer: The picture represents a Philips ballast, the products can be delivered with an other ballast brand however with the same connection principle.

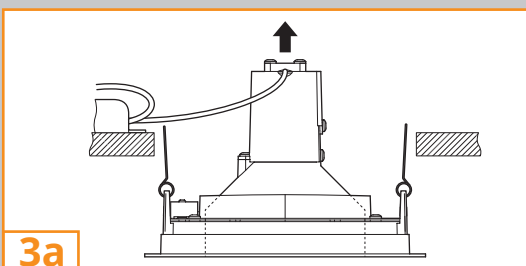




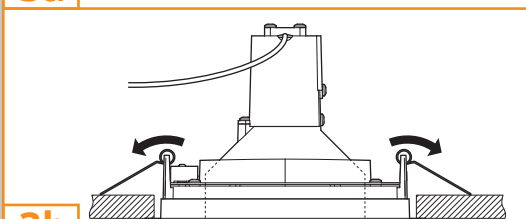
1. The luminaire shall be installed by qualified electrician and wired in accordance with the latest IEE electrical regulations or the national requirements.
2. Lightings should not work for a long time above temperature 40° otherwise it will affect its light source life.
3. The luminaire shall under no circumstances be covered with insulation matting or similar material.

## DOWNLIGHT D2

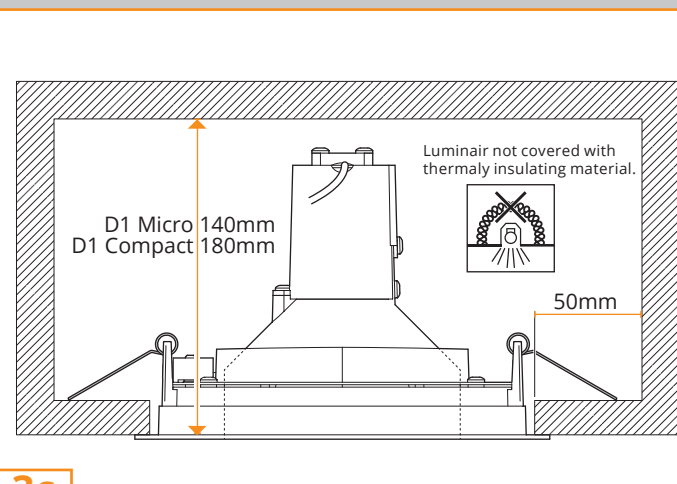
### Compact Micro



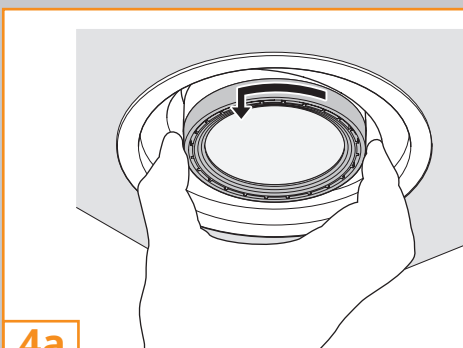
3a



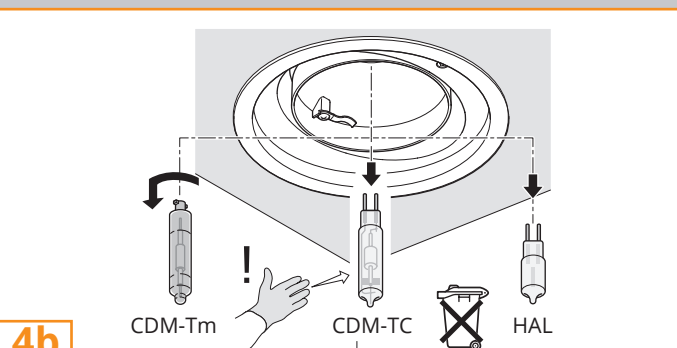
3b



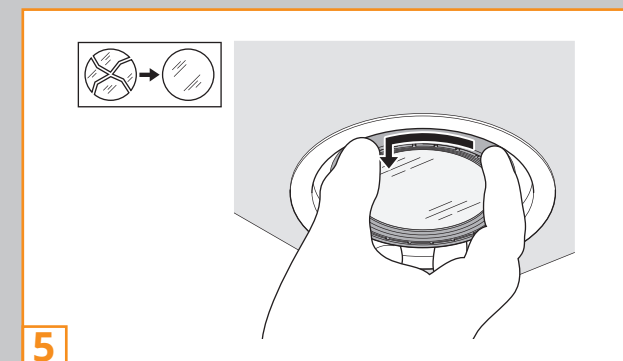
3c



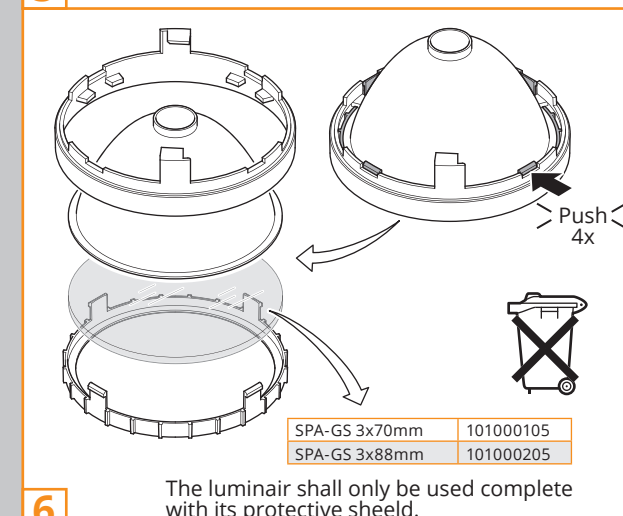
4a



4b



5



6

