



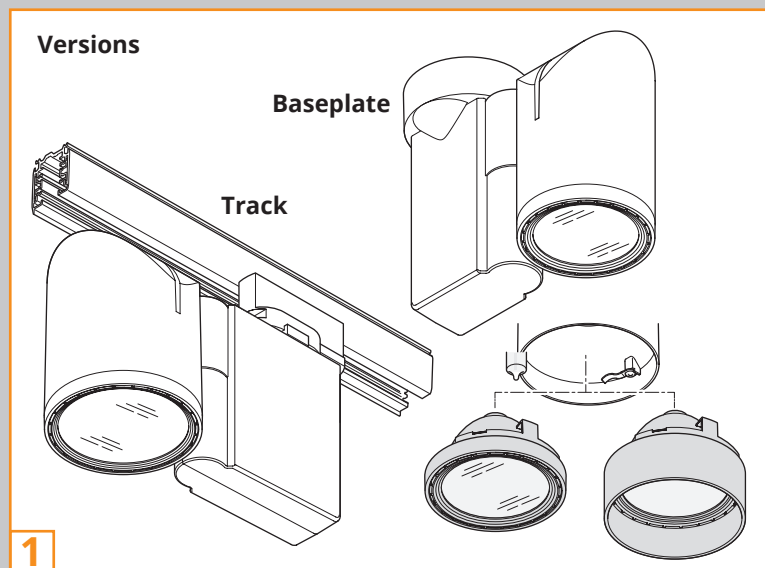
SPOTLIGHT S1

Technical Specifications

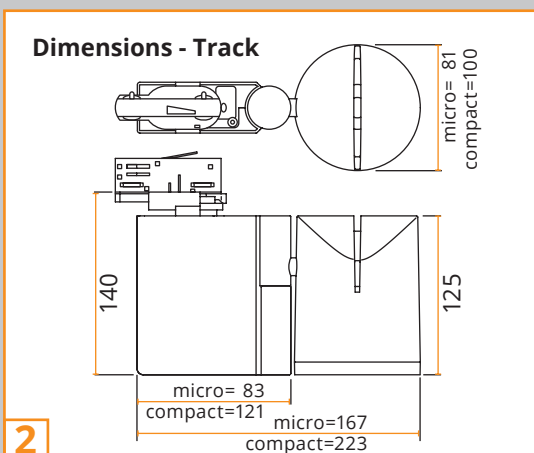
Version 1

S1-M	1xCDM-Tm 20W	1.1
S1-M	1xCDM-Tm 35W	1.1
S1-M	1xHAL 50W max.	1.1
S1-M	LED 10W	1.2
S1-C	1xCDM-TC 35W	1.1
S1-C	1xCDM-TC 70W	1.1
S1-C	1xHAL 50W max.	1.0

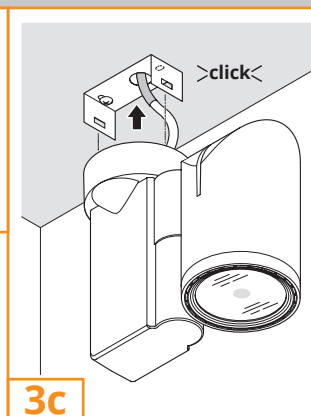
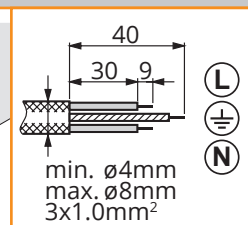
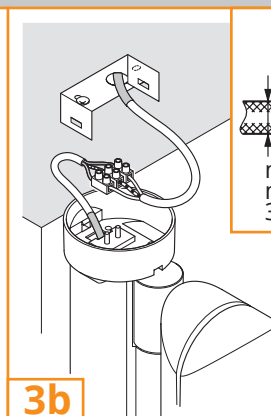
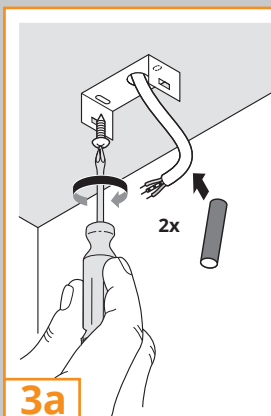
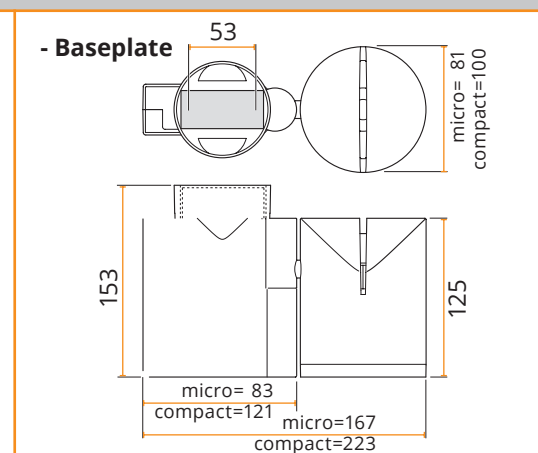
Versions



Dimensions - Track



- Baseplate





1. The luminaire shall be installed by qualified electrician and wired in accordance with the latest IEE electrical regulations or the national requirements.
2. Lightings should not work for a long time above temperature 40° otherwise it will affect its light source life.
3. The luminaire shall under no circumstances be covered with insulation matting or similar material.

SPOTLIGHT S1

Compatible with Global and Eutrac track type: XTS-4 and XTSF-4

